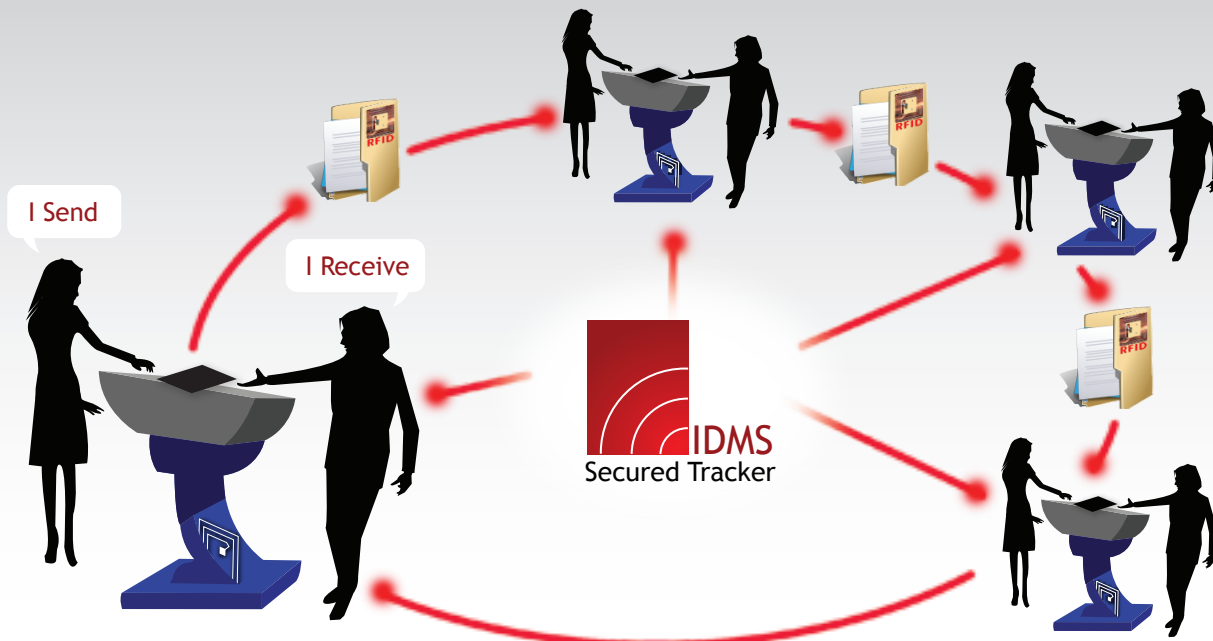




# RFID Your Workflow, Increase Your Productivity

**IDMS** is a state-of-the-art tracking system using RFID and biometric technology with IDMS Secured Tracker Software to provide you with the immediate location of documents and files. IDMS enhances corporate workflow with or without modification. IDMS organizations experience 2-3 fold workflow improvement.

**Who needs IDMS?** Government, corporate and small to medium industries who use security documents or files within their workflow will find IDMS highly effective in improving productivity.



## Locating the document used by **Anyone, Anytime, Anywhere.**

Highly effective tracking of documents and files in circulation or processing which improves organization workflow efficiency and productivity.

**IDMS** is a web and network-based software application which runs on  Linux,  UNIX and  Windows .  
*Linux, Unix and Windows are trademarks of respective organizations.*



## IDMS RFID Tag

By attaching an **IDMS RFID<sup>1</sup> Tag**, all documents and files can be tracked using the **IDMS Secured Tracker**. The **RFID<sup>1</sup> Tag** contains a microchip which emits a signal when scanned by an RFID<sup>1</sup> reader built into the **IDMS Station**. IDMS supports Gen-1<sup>2</sup> and Gen-2<sup>2</sup> tags.

1 Radio Frequency Identification

2 Generation-1 (HF) and Generation-2 (UHF)



## IDMS Station

Consists of the **IDMS Kiosk** and **Reader**. The **Kiosk** displays the current location of RFID tagged documents by retrieving movement history (personnel fingerprints, time, etc) from the IDMS database. It is fitted with a touch screen and fingerprint scanner. The **Reader** captures tag information and scans multiple documents simultaneously.

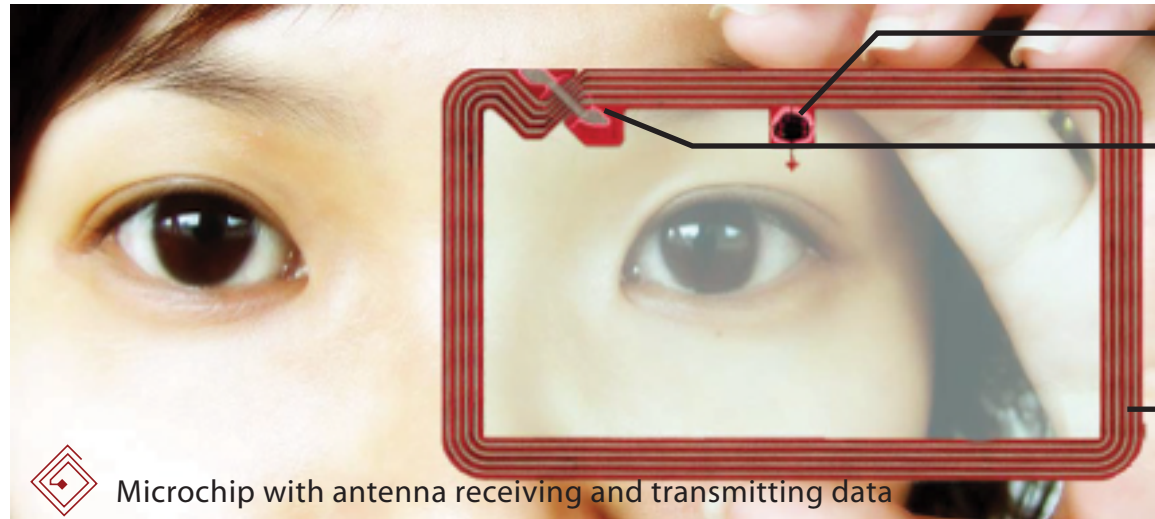


## IDMS Secured Tracker

A sophisticated tracking system that logs movement of RFID tagged documents between persons and *eliminates the need for manual recording*. The **Tracker** maintains a database (containing movement history, access rights, etc) that is updated as movement is captured from the **IDMS Stations**. It is installed on each **Station** and communicates with the database over a secured network.

Locating the document used by

# Anyone, Anytime, Anywhere.



Chip

Transformer

Antenna



Microchip with antenna receiving and transmitting data



Solution By:



Level 5, West Wing, Wisma 2020, 18, Lorong Belia, Karamuning, 88100 Kota Kinabalu, Sabah, Malaysia.  
Tel : (6088) 242001 Fax : (6088) 233787 Web : <http://www.srikom.com.my>

**Product Enquiry:**

Consulting Services Group

Email : [directors@srikom.com.my](mailto:directors@srikom.com.my) © All rights reserved.